

2008

CONFIDENCE



ANNUAL

COMPETENCE



COMMUNICATION



CARING

REPORT



Big Brothers Big Sisters
of the Greater Twin Cities

Enriching children's lives through one-to-one friendships

TABLE

OF

CONTENTS



A MESSAGE FROM THE PRESIDENT/CEO AND BOARD CHAIR	1
CELEBRATING 30 YEARS OF GIVING	2
COMMUNITY DAY BOWL FOR KIDS' SAKE	2
2008 MATCH ACTIVITY HIGHLIGHTS	3
AT FIRST GLANCE: BIG SISTER DONNA AND LITTLE BROTHER KIRBY	4
SNAPSHOT OF A COMMUNITY PARTNERSHIP	4
FRIEND, COACH AND MENTOR: MEET GREG BRUCKER	5
HIGH SCHOOL STUDENTS GIVE BACK	5
BIGS OF THE YEAR	6
2008 FINANCIAL RESULTS	8
THANK YOU TO OUR 2008 DONORS	10



Big Brothers Big Sisters
of the Greater Twin Cities

2550 University Avenue West
Suite 410 N
St. Paul MN 55114

651-789-2400
www.bigstwincities.org



GLORIA C. LEWIS, President and CEO



SARAH BUXTON, Chair of the Board of Directors

Dear Friends,

It was another exciting year for Big Brothers Big Sisters of the Greater Twin Cities (BBBS). To support our ongoing strategy to be the premier mentoring agency in Minnesota, we are investing in our infrastructure in order to improve and strengthen our mentoring programs.

During 2008, our management team implemented new financial tools, continued to improve our fundraising processes and contract management, increased visibility for BBBS programs in the Greater Twin Cities, and strengthened our community and corporate partnerships.

Our top priority is to cultivate strong, safe, mentoring friendships that last a long time. By maintaining a razor-sharp focus on how we manage our programs, BBBS is building a stronger society one child at a time. With our new financial and process tools, we are expanding our capacity to raise money and attract volunteers. We are confident that these activities will foster growth in the future. Though we are focused on making positive changes, the current economic environment is affecting our ability to raise money. At the same time, it's harder to recruit mentors who are battered by the current conditions and find themselves working longer hours or holding down additional jobs so that they can survive. Our volunteer Big Brothers and Sisters are finding it harder to spend time with their Littles when they, themselves, are under increased pressure.

While we read the news of decreased corporate earnings, slashed workforces, public debts, increased foreclosure and bankruptcy rates, we don't always think about how these issues will negatively affect the children in our communities. Just as our matches and our staff are stretching beyond what they thought they could do, we are asking you to reach deep into your heart and help us with your most generous gift possible at this time.

Each and every day, we are surrounded by people who are so passionate about the BBBS mission that we are continually inspired to do everything possible to make sure we are able to find more volunteers, match them to our wonderful Little Brothers and Sisters, support those friendships throughout the lifetime of their matches, and empower our young people to pursue educational opportunities after high school.

Big Brothers Big Sisters plays a vital role in ensuring our children grow up healthy, confident and able to face day-to-day challenges, which is why we are so thankful for the support we receive from donors, friends and volunteers like you. While we face tough economic challenges in the year ahead, we look forward to strengthening our relationships with each of you as we continue to expand the opportunities made available to the young people in our programs and to raise the funds that enable us to serve our kids.

With heartfelt thanks,

A handwritten signature in cursive script that reads "Gloria C. Lewis".

Gloria C. Lewis
President and CEO

A handwritten signature in cursive script that reads "Sarah Buxton".

Sarah Buxton
Chair, Board of Directors

COMMUNITY DAY BOWL FOR KIDS' SAKE

On November 1, 2008, 110 individuals on 22 teams joined the BBBS Community Day Bowl for Kids' Sake, raising more than \$19,000 – more than double the 2007 amount donated. The funds raised will be used to find and engage volunteer mentors, enroll children and volunteers, match Bigs and Littles, and support mentoring relationships in the Greater Twin Cities region. With a Halloween theme, a great time was had by all!



DAVID AND HARRIET CONKEY: CELEBRATING 30 YEARS OF GIVING

Consider the span Big Brothers Big Sisters of the Greater Twin Cities has stretched. Our reach is truly remarkable as our programs extend through the lives of individuals and families, across geographies and even through the stretch of time. The simple truth is that without the generosity of financial and volunteer support, BBBS would have no reach at all.

Harriet and David Conkey have been donor supporters of Big Brothers Big Sisters of the Greater Twin Cities for 30 years now. Their overall investment in our programs is one of the longest standing on record. From the very beginning, even when Big Brothers of America and Big Sisters International were separate organizations, they recognized that what we offer to young people by engaging them with one-to-one mentoring friendships is incredibly valuable.

When asked what motivated them to give to BBBS consistently through three decades, Harriet replied, "Kids need a lot of encouragement and continuity in their lives, and you do such a great job with your mentoring programs."

The continuity we are able to provide in the lives of young people is a direct reflection of the agency affiliation felt by committed donors just like David and Harriet. Their commitment was even bolstered in this last decade, as their grandson, David, along with his wife, Aimeé, have been extremely active with Big Brothers Big Sisters of Great Falls in Helena, Montana. If their grandchildren could work so hard to raise support and awareness of BBBS programs out West, David and Harriet wanted to make sure they did their part for young people right here in the Twin Cities.

David and Harriet, both 86, speak modestly about their giving, wishing they could do more, but their legacy of faithful giving is worthy of recognition as it has touched the lives of young people enrolled in our programs for generations. We have immense gratitude for their long history of support.



David and Harriet Conkey

HIP HOP DANCE



Last summer, ten Community-based matches participated in a series of Hip Hop dance classes. Instructor Kenna Sarge spent two sessions teaching the group of Bigs and Littles separate, choreographed routines. During the third and final session held on July 1, 2008, the matches performed their routines for an audience of friends, family and BBBS staff gathered at Central Gym in Minneapolis. The crowd went crazy as the matches showed off their new moves and even let loose with a “free-style” performance.

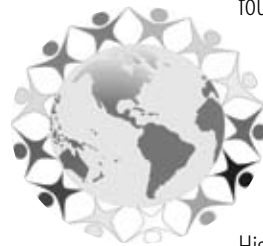
Every participant took home a framed photo of their match along with a Big Brothers Big Sister Hip Hop Team T-shirt.

One Big commented after the event, “It was incredible for me to see my Little Sister so confident in herself. She was glowing during the performance.”

MARKET FIESTA

In October, Bigs and Littles gathered at the Midtown Global Market on Lake Street in Minneapolis for a taste of international culture.

Dance instructors taught the group how to salsa, merengue and cha-cha. The Littles were timid at first but soon found their rhythm as intrigued market goers looked on.



After dancing, the 10 participating matches were given a cooking demonstration at Salsa a la Salsa, where the chef prepared a traditional Hispanic dish. For lunch, the group had the chance to try any of the ethnic restaurants with their special “Market Money.” The day ended with a scavenger hunt that took Bigs and Littles through the marketplace to engage with shop owners and their respective cultures.



FISHING WITH THE PROS

On a cool and overcast June morning, 25 matches met up in Hagar City, Wisconsin, for a totally unique day of fishing. For the fourth year, BBBS joined forces with an association of experienced fishing guides and enthusiasts, known as Anglers Are Role Models (AARM).

When matches arrived to Everts Resort, they were outfitted with fishing gear, including rods and tackle boxes for the Littles to keep. Then, each match partnered with an expert, and the groups of three set out in their own boats to fish the back channels of the Mississippi River.

Even for Littles who had fished before, this was a whole new experience as they spent the day zipping from spot to spot chasing after the big ones. After a lunch of burgers and brats on the shore, the weather broke, giving way to sunny and warm afternoon, which capped off an already spectacular day.

JAICEON IS WAITING FOR A BIG BROTHER!



I want a big brother so I can talk to him and do flips

SNAPSHOT OF A COMMUNITY PARTNERSHIP



City Officials joined BBBS President and CEO Gloria Lewis (far right) to announce the partnership. Pictured left to right are: Big Brother and City CFO Patrick Born, Mayor R.T. Rybak, and Big Sister and City Employee Kristin Guild.

Last spring, Big Brothers Big Sisters of the Greater Twin Cities proudly partnered with the City of Minneapolis and Mayor R.T. Rybak's office to engage mentors for young people in the Folwell, Hawthorne, Jordan, McKinley and Phillips neighborhoods. As a key partner in the City's *Blueprint for Action: Preventing Youth Violence in Minneapolis*, we met with hundreds of City employees between May and October to engage them as Big Brothers and Big Sisters. The Blueprint was developed by a work group of City, County and community experts to reduce the challenging problem of youth violence in our community. A central component of this plan calls for every Minneapolis young person to have a trusted adult in his/her life and identifies mentoring as a key strategy for connecting young people to adults.

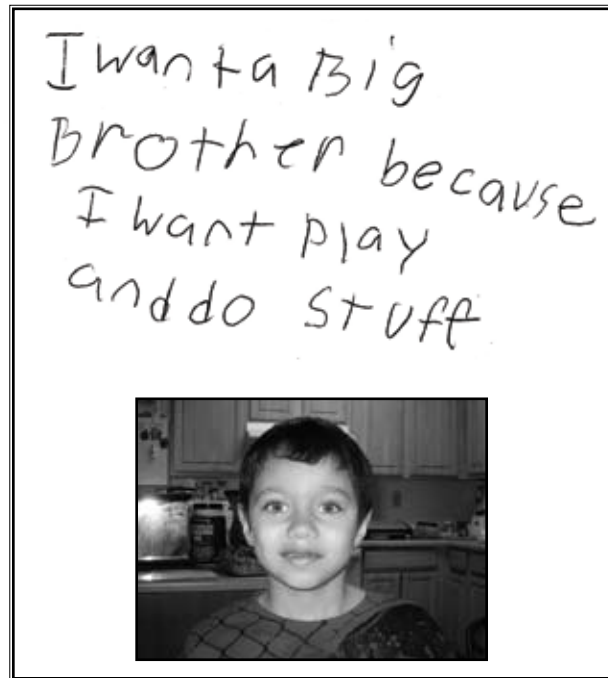
We continue to work closely with City officials to identify volunteers from across Minneapolis who will mentor the young people in our Community-based and School-based programs.

AT A GLANCE: DONNA AND KIRBY

At a glance, Donna Dorion and young Kirby have some distinguishable differences. Donna is 60 years old, Caucasian and female while Kirby is 9 years old, African American and male. But matched for over a year now, the two prove that the connecting lines that sustain our mentoring friendships always carve a path well below the surface.

Donna, like all of our volunteers, felt she had something to offer to the life of a child. As an avid outdoorswoman, she hoped to be matched to someone who carried that same adventurous spirit. She also felt her active lifestyle might be best suited for a Little Brother.

KAIYAN IS WAITING FOR A BIG BROTHER!



Donna met her match with Kirby, whom she describes as inquisitive, smart and willing to try anything. Age and gender preferences could have slowed the matching process, but Kirby's mom, Sherri, had decided that her son would thrive just as easily with a Big Sister as with a Big Brother. "If someone has similar interests with a kid, and the two would have a lot in common ... that matters more than things like gender or age." Clearly, Kirby felt the same way. "He didn't even bat an eye at the thought of a Big Sister," says Sherri.

Perhaps the biggest obstacle the two had to overcome was breaking the ice, "There was shyness on both our parts as we got to know each other," says Donna. But, through the course of time, that's all changed. When asked how she's been affected by her friendship with Kirby, Donna replied "I've learned a lot of patience, and I've learned a lot about unconditional love. Kirby has brought just as much to my life as I hope I've brought to his."

What Donna has given Kirby is a safe adult to talk to, someone who is an ally and someone who understands him. For that, Sherri is grateful. "Donna allows Kirby to be himself probably more than any other adult. He doesn't have to squelch any part of his personality when he's with Donna," she says. He has ample opportunity to interact with other adults in his life, but Kirby looks forward to his time with Donna in particular. As Sherri puts it, "His time with Donna is special. His sister isn't around; I'm not around. He has freedom to be himself."

That is why a friendship like Donna and Kirby's makes perfect sense.



FRIEND, COACH AND MENTOR

Greg Brucker has always had a soft spot in his heart for kids. He loves the energy they bring to life, their potential as unique individuals and the fresh perspective they have on the world. While Greg was looking for a meaningful way to connect with young people, he looked into Big Brothers Big Sisters of the Greater Twin Cities. In 2007, he decided to volunteer.

When meeting with his Match Coordinator, Carole, she told him about young Jamal, a very reserved eleven-year-old who loved sports. Greg agreed to be Jamal's Big Brother, trusting Carole's insights into the match process.

Jamal kept extremely quiet when the pair got together in those first few months, but that would change. Early in 2008, Greg invited Jamal to watch the Super Bowl at his place, and during the game, Jamal suddenly opened up. "By the end of the night, it was like he was a different kid. He was so excited and talked up a storm," Greg recalls.

It was that passion for sports that gave the two an opportunity to really connect. Greg went on to coordinate Jamal's registration for football, basketball and baseball leagues. He helped coach Jamal's baseball team, and he helped the other coaches organize rides, deal with behavior issues, recruit players, provide treats and raise money for equipment.

During Jamal's first year playing sports, teammates became friends. "In the beginning, Jamal didn't know many kids and had a hard time opening up to them because he was so quiet. Now, he is part of a group," says Greg.

Besides noticing an increased confidence among both adults and his peers, Greg has witnessed Jamal's innate sense of determination really come to life. His focus and practice in basketball earned him the Most Improved Player trophy in March.

That internal drive has spilled off the court as well. Jamal is excelling in school, often bringing his A papers along on activities to show his Big Brother. That's a definite change according to Greg, "Last year Jamal didn't want to talk about school at all. In fact, he couldn't wait for the year to end." Previously, Jamal hadn't even considered post-secondary education as an option, but now he sees college as part of his future reality.

Greg calls his match with Jamal one of the most rewarding and intense experiences of his life. He is continuously grateful for the time they spend together. "Jamal is one of the neatest kids I have ever known," Greg says. "Some day, he will tell his own amazing story of what he has accomplished in his life, and that will be a dream come true."

HIGH SCHOOL STUDENTS GIVE BACK

In the past year, high school students from around the Twin Cities banded together to form The High School Leadership Council for Big Brothers Big Sisters. Fifteen students stepped forward from eight metro-area schools, including Arlington, Harding, Como, Patrick Henry, DeLaSalle, Blaine, Washburn and Breck. BBBS is proud of the team's hard work and everything they have achieved in the brief time they have been together.

The student leaders were instrumental in planning Mentoring Month, which focused on educating peers about the benefits and rewards of mentoring children. They promoted Big Brothers Big Sisters at their high schools by hanging posters that detailed our programs and donning BBBS t-shirts to spread awareness about the organization.

The Council also planned the first-ever High School Volunteer Appreciation Event at Roseville Central Park, which included a picnic lunch and an intricate scavenger hunt full of team-building activities and physical challenges. More than 50 High School Bigs attended, and everyone was given a handmade "You Rock" award in gratitude for their contributions during the school year. Several lucky Bigs received door prizes, such as movie tickets, Twins tickets and even an iPod. The event received rave reviews, and the Council is looking forward to planning its second annual appreciation event in 2009.

The Council also worked closely with BBBS staff to create an internship opportunity for high school students. During the summer of 2008, BBBS hosted three high school interns who worked to develop activities used by the School-based Program. We hope that by having these young leaders active in the work of BBBS now, we are raising the next generation of volunteers, advocates and supporters.

COMMUNITY-BASED BIGS OF THE YEAR



BILL HUFF

During the past six years, Bill Huff has provided his Little Brother, Jaquan, with support and guidance in many areas of his life. “Jaquan has really grown on me,” Bill explains. “He has always been a good kid; he just needed more direction.”

Bill has spoken with Jaquan about success in life and what it means, always stressing the importance of academics as well as the value of character. In the beginning of their relationship, Bill told Jaquan that he would support him in school as long as he was doing his best. Bill also has had a positive influence on Jaquan’s choice of friends. Early on, Bill asked Jaquan to tell him about his friends. Bill soon realized that they were not most positive people Jaquan could be around. According to Bill, he told his Little Brother, “Those are the people you need to get away from. You don’t want to go down the path they are following.” This year, Jaquan is not only listening to Bill, but is following his advice. He was proud to show Bill his report card with all As. Jaquan also has made new friends who are a positive influence on him. Furthermore, Jaquan is working on giving back to the community. He has even called Big Brothers Big Sisters to ask about volunteer service ideas.

Bill feels especially compelled to help influence the lives of African American boys. Bill says, “More prisons are being built than colleges or universities. It’s time to say something and do something. It takes a village to raise a child, which is why Big Brothers Big Sisters is such an important organization to be a part of.” Along with being a Big Brother, Bill also is a volunteer at Maple Grove Senior High and Junior High Schools. He monitors the lunch rooms, chaperones dances and field trips, and helps kids with their schoolwork.



SUE DAVIES

For more than eight years, Sue Davies has provided support, hope and friendship to her Little Sister, Angelica. While Sue and Angelica have faced some challenges during their time together, they have always overcome them as a team.

One challenge they faced was when Angelica’s grades began to slip due to seizures, something she has dealt with since she was seven years old. To help Angelica with school, Sue helped her make a plan to stay on track. By the end of the school year, Angelica made the honor role. To help minimize her seizures, Angelica had brain surgery about one year ago. With the surgery came concerns about Angelica possibly losing her ability to speak and having short-term memory loss. During this difficult time, Sue was there to help Angelica work through her feelings.

In addition to the support Sue has provided Angelica, she also is always encouraging Angelica to have a positive outlook about her future. With aspirations of being math teacher, Angelica has some anxiety about being able to afford college. Sue encourages her not to worry. Together, they are planning on taking advantage of Big Brothers Big Sisters’ Education and Enrichment Program so that Angelica can pursue scholarship opportunities.

Sue’s relationship with Angelica has been strengthened through the good and bad times, which they have faced as a team. Today, Angelica says that she can’t imagine her life without Sue. Sue feels the same way about Angelica and admits that Angelica has probably taught her more than she has taught Angelica. Sue feels very fortunate to have met Angelica and wishes she wouldn’t have waited as long as she did before becoming a Big Sister. Sue and Angelica continue to look forward to their time together, whether it is spent cooking healthy meals, working on tricky math problems or learning a new skill – they have recently learned how to knit.

As if being a great Big Sister wasn’t enough, Sue is a huge advocate for Big Brothers Big Sisters and often tries to recruit her friends. She also has attended many BBBS events, including Big Happy Hours, summer picnics and volunteer appreciation events.



CYNTHIA RICE

Cynthia Rice, an Allianz employee, has been a Big Sister since 2004 and has been matched with her Little Sister, Delaney, since October 2007. Cynthia is a dedicated Big Sister. Though her work can keep her incredibly busy, she always makes time for Delaney. You can usually find her on Tuesdays around 11:15 a.m., running down the hallways of Allianz telling everyone who tries to stop her, "It's my Little Sister's time now!"

Cynthia is a true role model for Delaney. She understands the importance of education and helping young women live up to their potential so she makes sure to include these elements in her relationship with Delaney. Cynthia has noticed that Delaney doesn't always have the motivation to achieve her goals and has helped Delaney recognize that her academic performance and education are important for her future. Now, Delaney has dreams of being something great when she grows up. Cynthia takes every moment to pump Delaney up and encourage her to reach her full potential.

Cynthia does more than make a difference in her Little Sister's life. Every week, Cynthia works with her Match Coordinator to brainstorm new ways to reach out to Allianz employees in order to recruit more Bigs and, consequently, help serve all of the children at the FAIR School, where Allianz has a partnership through Big Brothers Big Sisters. She is a true champion of our program and a role model for her Little Sister and other Bigs in our program.



JOHN Mc CARTHY

John McCarthy has been matched with his Little Brother, John, for three years. Due to the coincidence of having the same name, they refer to each other as "Big John" and "Little John."

Little John often waits for Big John at the front door of Poplar Bridge Elementary, and as soon as he sees him walking up, Little John will run out and greet Big John with a hug. Since their match began, Big John has seen Little John take his schoolwork more seriously and his confidence soar. Gayle, Little John's mother, has noticed that her son has become more independent and embraced many good values in the years since first meeting his Big Brother.

Big John has been a consistent, positive male role model in Little John's life, and their Match Coordinator (MC) believes this has helped Little John with his grieving and feelings of loneliness since his dad's death. Their MC often overhears Little John telling Big John how special he is and how much he means to him. Recently, Little John said to their MC, "Today is a great day." Then, he turned to Big John and said, "But Wednesdays are always special because it's when I get to see you."

Little John has committed to Big John that one day he will become a Big Brother and pass on his great qualities to another lucky kid. When asked what he enjoys most about being matched with Little John, Big John replied, "It is very rewarding to see how a little commitment of time can make such a positive difference in someone's life."

DE'ARIES DICKSON

De'Aries Dickson, a 12th grade student at Henry High School, signed-up for Big Brothers Big Sisters' School-based Program at the end of his sophomore year and completed the enrollment process the following summer. It was clear from the very beginning that De'Aries is committed to children and giving back to his community.



During the first year of his match with his Little Brother, Javien, a fourth grader at Jenny Lind Elementary, De'Aries demonstrated incredible dedication. He had nearly perfect, weekly attendance. During one cold week, he missed the bus that brought the Henry High School students to Jenny Lind. Undeterred, De'Aries walked from Henry to Jenny Lind about one mile. He showed up with frozen hands, but a smile on his face.

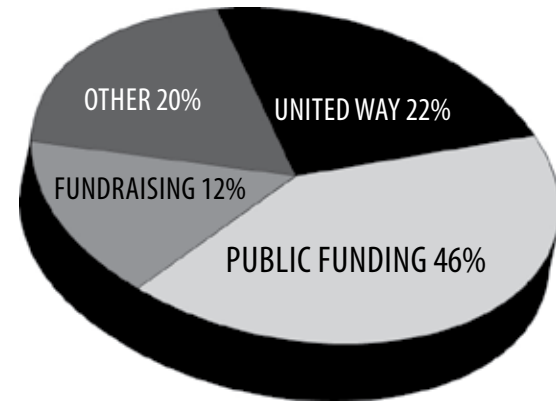
De'Aries continues to be a committed Big Brother even when unfortunate circumstances arise. De'Aries lost his father last year, with whom he had a very close relationship. Javien and their Match Coordinator planned on making De'Aries a card during their regular meeting time, not expecting De'Aries to show up under the circumstances. To their great surprise, De'Aries still came to see Javien. When told that he could go home to be with his family, De'Aries replied, "No, I'd rather be here. Hanging out with Javien makes me happy."

Javien's mother says that she has seen her son's self-confidence soar since he met De'Aries. She is impressed with De'Aries willingness to reach out to a child who isn't a relative. She feels very grateful for all of the baskets De'Aries and Little Brother have shot, all of the math problems they have solved and all of the laughs they have shared. De'Aries is truly a shining example of the amazing quality of our High School Big Brothers and Sisters.

2008 STATEMENT OF ACTIVITIES

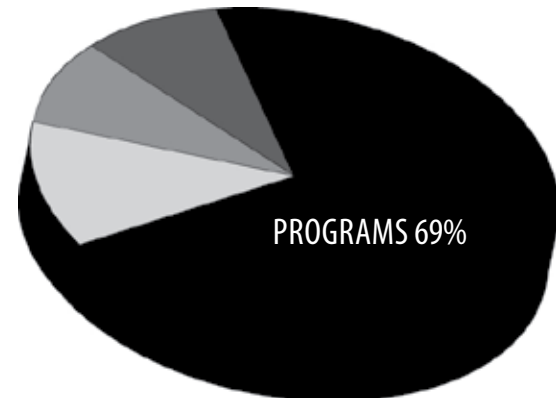
SUPPORT AND REVENUE	2008	2007
UNITED WAY	\$ 986,415	\$ 984,032
PUBLIC CONTRIBUTIONS	2,088,133	1,809,033
FUNDRAISING	536,710	654,196
OTHER INCOME	891,985	880,830
TOTAL SUPPORT AND REVENUE	<u>\$ 4,503,243</u>	<u>\$ 4,328,091</u>
EXPENSES		
PROGRAM	\$ 3,259,486	\$ 3,283,882
MANAGEMENT AND GENERAL	654,184	589,665
FUNDRAISING	486,260	420,311
VOLUNTEER RECRUITMENT	355,148	419,009
TOTAL EXPENSES	<u>\$ 4,755,078</u>	<u>\$ 4,712,867</u>
CHANGE IN NET ASSETS FROM OPERATIONS	\$ (251,835)	\$ (384,776)
NON-OPERATING CHANGE IN NET ASSETS	(679,540)	97,658
CHANGE IN NET ASSETS	<u>(931,375)</u>	<u>(287,118)</u>
NET ASSETS - BEGINNING	3,405,177	3,692,295
NET ASSETS - ENDING	<u>\$ 2,473,802</u>	<u>\$ 3,405,177</u>

INCOME SOURCES



DOLLARS WELL SPENT

FUNDRAISING 10%
VOLUNTEER RECRUITMENT 7%
MANAGEMENT & GENERAL 14%



ASSETS	2008	2007
CASH AND EQUIVALENTS	\$ 696,131	\$ 401,102
RECEIVABLES		
CONTRACTS RECEIVABLE	148,596	256,425
PLEDGES AND GRANTS	235,716	564,201
PREPAID EXPENSES	141,598	30,808
ACCRUED INTEREST	-	-
SHORT TERM INVESTMENTS	18,303	174,782
OTHER ASSETS		
PROPERTY AND EQUIPMENT, NET	\$ 37,580	\$ 80,315
SECURITY DEPOSIT	5,000	-
INVESTMENTS	1,483,921	2,153,736
COMMUNITY FOUNDATION HOLDINGS	9,283	13,592
PLEDGES AND GRANTS RECEIVABLE (LONG TERM)	5,920	89,730
TOTAL ASSETS	\$ 2,782,048	\$ 3,764,691
LIABILITIES AND NET ASSETS		
ACCOUNTS PAYABLE	\$ 45,128	\$48,447
ACCRUED EXPENSES	199,941	221,722
OTHER LIABILITIES	63,177	89,345
TOTAL LIABILITIES	\$ 308,246	\$ 359,514
NET ASSETS	2,473,802	3,405,177
TOTAL LIABILITIES AND NET ASSETS	\$ 2,782,048	\$ 3,764,691

VOLUNTEER COMMITMENT



Actor and Author Hill Harper with Big Sister Deanna Nurnberg (BBBS Vice President of Research, Evaluation and Special Projects) and Little Sister Kang at the 2008 Annual Meeting, held on November 21.

In 2008, volunteers contributed a total of 169,849 hours to Big Brothers Big Sisters of the Greater Twin Cities.

Big Brothers and Sisters spent a total of 161,664 hours with their Little Brothers and Sisters. Volunteer staff and AmeriCorps members donated 8,185 hours of their time and expertise.

At a current value of \$20.25 per hour, our volunteers contributed a total value of more than \$3.4 million to the young people and communities we serve.

THANK YOU TO OUR 2008 DONORS

INDIVIDUAL DONORS

* indicates donor is a current or former Big Brother or Big Sister

\$50,000+

Greg and Cynthia Page*
Estate of Eleanor Pederson

\$20,000 - \$49,999

Generous Anonymous Donor*
Bill and Jeannie Buckner
Marti Morfitt and Patrick Weber
Reed and Margie Tuckson
E. Thomas and Rita Welch

\$10,000 - \$19,000

Paul and Lynne Blomgren*
Shirley J. Hughes
David and Janis Larson
Chuck and Terri Roehrick

\$5,000 - \$9,999

Generous Anonymous Donors
Anonymous Employees of General Mills, Inc.
Al and Cathy Annexstad
Sarah Buxton and Julie Brown
Mike and Renee Carrel
David and Margaret Dines
Beth LaBreche and Eric Johnson
Laurie and Dan Lafontaine
Richard and Joyce McFarland
Neil and Julie McKay
Daniel and Heidi McKeown
Pamela S. Olson*
Colleen and David Reitan
Frank and Robyn Sims*
Richard and Elizabeth Uihlein
Pat Williams

\$2,500 - \$4,999

Anonymous Employees of Ameriprise
Anonymous Employees of Andersen Corporation
Anonymous Employees of Target Corporation
Anonymous Employees of Thomson West
Mary Brown and Donald Himsl
Foster and Elaine Cole*
Susan and Justin Kelly*
John and Cindi Machuzick
James A. Michaels
Gary and Deborah Nelson
Kimberly and Ronald Price
Mary M. Russell
Sharon and Robert Ryan
Scott Schroepfer and Jacqueline Churchill*
Richard M. Schulze
Jim and Sheri Simpson
James and Gabrielle Thon
John and Rachael Vegas*
Linda Hall Whitman
Brad and Deb Yopp

\$1,000 - \$2,499

Anonymous Employees of 3M
Anonymous Employees of HSBC Bank
Anonymous Employees of UnitedHealth Group
Marcia Ailport
Robert and Carolyn Albright*
Paul and Jayne Anderson
Roz Andreucci
James Andrews
Martha Aronson
James and Mary Benson
Colin and Julia Breyer*
Jeffrey E. Buescher
Edward and Judy Cannon
Gina Cesaretti and Michael Iwan

Michael and Joyce DeVito
Craig and Astrid Diviney
Jeffrey Ebert
Stephen and Karen Erdall
Michael and Jane Felmlee
John B. Ficklin
Steve and Diane Galleger
Alan Geiwitz and Mary McMahon*
Richard and Sheridan Hafdal*
James Haglund
Michelle M. Haupt
Michael Hiller*
John and Amy Hueg
Jennifer Jenson
Tracy and David Johnson*
David and Leigh Kaercher
Mike and Nancy Keller
Mark and Amy Kersey
Steven E. Landberg
Andre Lewis
Gloria and Craig Lewis
Mary Jane and Steve Lindholm
Mary Jo and Dean Lindholm
Mike and Patti Marinovich
Robert L. McCollum
Wenda and Cornell Moore
Holly and Travis Morehead*
Mark and Wendy Nesheim*
Kimberly and Steve Nguyen*
Benjamin and Lynn Oehler
Shawn O'Grady
Nancy and Bob Olikier*
Mark Peterson
Robert Potts
Steven Radtke
Peggy L. Raisanen*
Bill and Susan Sands
Dennis J. Schapiro*



Big Brother Tim and Little Brother Avery

LEGACY DONORS

The following donors have generously included Big Brothers Big Sisters in their estate plans. For more information about this opportunity, please contact Claire Bey at cbey@bigstwcities.org or 651.789.2492.

Laura Anders	Mark Krivoruchka
Kay Anderson	Dean and Mary Jo Lindholm
Ed Christie	William Curt MacKenzie
Foster and Elaine Cole	Pamela S. Olson
Barry Graceman	Greg and Cynthia Page
Cary Johnson	Linda Hall Whitman
Barbara Koch	



Little Sister Miko and Big Sister Chasity

THIS LIST NAMES ONLY A FEW OF THE PEOPLE AND ORGANIZATIONS WHOSE GENEROSITY MAKES IT POSSIBLE FOR BIG BROTHERS BIG SISTERS OF THE GREATER TWIN CITIES TO SERVE ITS MISSION. DUE TO SPACE CONSTRAINTS, WE ARE UNABLE TO LIST EVERYONE WHO PROVIDED SUPPORT FOR OUR WORK. THANK YOU TO ALL OF OUR SUPPORTERS.

WORKPLACE GIVING ORGANIZATIONS

The following organizations encouraged their employees to make charitable contributions to agencies that support the community. Employees of these organizations chose to designate their payroll contributions to Big Brothers Big Sisters.

- Allstate Giving Campaign
- America's Charities, Inc.
- Ameriprise Financial Gift Matching Program
- AT&T United Way Employee Giving Campaign
- Bank of the West Employee Giving Program
- Chevron Texaco People Making a Difference Campaign
- City of New Brighton
- Ecolab, Inc.
- GMAC-RFC
- GoodSearch
- ING
- JustGive
- KPMG
- Michaud Cooley Erickson & Associates, Inc.
- Missionfish
- Network for Good
- Prudential Foundation
- Share Save Spend
- Thrivent Financial for Lutherans Foundation
- Wachovia Foundation
- Wells Fargo Community Support Campaign

- Lonna-Jean Schmidt*
- Guy and Susan Shoemaker
- Adam Simmet
- Phil and Schele Smith
- Rick and Nancy Solum
- Craig and Connie Swanson*
- Susan K. Swenson*
- Aaron Tatone
- Kevin E. Thompson
- Judith Tilsen and James Lewis
- Michael Ujhelyi
- Dennis Walsh
- Clark and Sharon Winslow
- Terry and Nina Wobken
- Matthew and Janine Yordy

\$500 - \$999

- Anonymous Employees of Lund Food Holdings, Inc.
- Anonymous Employees of Polaris Industries Inc.
- Anonymous Employees of Washington County
- Barb and Tran Alfrey
- Laura Anders*
- Yvonne Baller
- Joel M. Baumgartner
- Jesse J. Bergman
- Drew J. Bergstrom*
- Linda and Dale Blyth*
- Brian and Teresa Bowers
- Lester and Theresa Brunker
- Randall and Teresa Christenson
- Jason Chu
- Jason A. Coffel
- Steven J. Connolly
- Martin Conover and Jeffrey Kirkwood*

- Nancy E. Cooke
- Lynn Cornwell
- Edward and Sherry Ann Dayton
- Fred Dickson
- Michael Dimond
- Dave and Kathy Eide
- Karla Ekdahl and Peter Hutchinson
- Barbara B. Engen
- Michelle M. Evans
- Greg Flanagan
- Steven Fritze
- Jason P. Gerard*
- Merle Bell Gonzales
- E.J. Henderson
- Jackie and Gregory Hoglund
- Anna L. Hooper
- Alan Johnson
- Tim C. Johnson
- Ronald V. Kalin*
- Barbara J. Kastanek
- Jayne E. Kennelly*
- Joe Kolstad
- Larry and Tammy Kuenster
- Sandra Kunert
- Paul Lehnertz
- Lois Lenarz and Robert Kolasa
- Annie Loch
- Richard Loch
- Hector E. Martinez*
- Larry D. Matthews
- Stanley McCoy
- Dirk C. McMahon
- Kevin T. Meehan
- Lisa Milan
- James and Terese Miller
- Melanie K. Miller*
- Bryan and Shelly Moen
- James Momon*

- Lisa Mulcare
- Dick and Joan Niemiec
- Dennis J. Oestreich
- Brandon Oslund*
- Bud Pappas
- Christine and Greg Paulson
- Dave and Sue Pearce
- John and Nancy Peyton*
- Kerri L. Podewell
- Scott and Mary Ann Portnoy
- Bill Prairie
- Justin Revenaugh
- Channing W. Riggs
- Paul and Amina Rinke*
- Scott and Amy Robinson
- Frank and Betsy Russomanno
- Kathleen and Michael Ryan
- Jeffery S. Savage
- Gregory Schlafer
- Derek R. Scott
- Michael J. Sharkey
- Daniel Shogren*
- Jeffery G. Siemon
- James R. Simon
- Suzanna and Kraig Smiegowski
- Kristin E. Stout
- Brian and Janice Sweeney
- David Swenson
- Lisa Thompson
- Pete and Adrienne Thorpe
- Greg Thorsen
- Gerald and Susan Timm
- Terri and Mike Trombley
- Richard and Karen Van Beusekom*
- Robert and Ann Weber*
- Justin Westerlund
- Thomas and Angela Wicka
- Rebecca Yanisch
- Megan and David Young
- James Zavodny, Jr.

\$250 - \$499

- Anonymous Employees of Medica
- Amjad Ahmad and Joan Peterson
- Chris Anderson
- Mary Author
- Keri J. Baird-Maage
- John and Elizabeth Balay
- Victoria J. Bayerl
- Doris and Tim Baylor
- Steven Beavers
- Christine Becker
- Markus Benson*
- Fazil and Cindy Bhimani
- Heidi Bjugstad
- Chad Boisseau
- Michael S. Brophy
- Britta D. Brown
- Phil Campbell
- Jean Cash
- Benjamin M. Christenson*
- Kelly A. Christianson*
- Doron Clark*
- Peter and Mary Jo Conzemius
- Peter Cote
- Susan A. Davis
- Michael and Kristi Dick
- Jeremy D. Diebling*
- Barbara J. Diekmann*
- Barry Dietrich*
- Cindy Edwards
- Paul Egeland
- Peter Eichten*
- Thomas and Diane Emer*
- Tim and Kathryn Fetterly
- David Fettig and Nancy Baldrice*
- Mary Jo Flynn
- Jack and Madeline Foss*
- David and Katharine Frederick
- Daniel Funk
- Ann Gagen

THANK YOU TO OUR 2008 DONORS

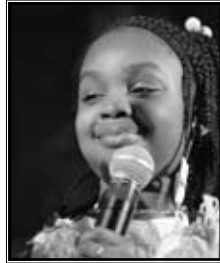
THE 11TH ANNUAL GALA MASQUERADE BALL: VENETIAN CARNIVALE



Gloria Lewis (BBBS President and CEO) and Craig Lewis



Former Little Sister, Annexstad Scholar and phenomenal vocalist, Zakiya Edwards, opened the program.



Little Sister Ajali shared her award-winning poem during the dinner program.



Brett Ptacek and Julie Christman wore spectacular masks.

Sarah Gordon
Steve Gravel
Andrea Grazzini Walstrom
Jason S. Grev
Patricia M. Gries
Phil Griffin
Kathleen Y. Guck
Harry J. Gwinell*
Patti Hague and Barbara Merrill*
Jerome and Crystal Hamilton
Randall Hanna
Barbara J. Hanson
Ariel Harrison*
Kelli G. Harty
Bud and Carol Hayden
Lori Heinrichs
Paul and MaryKay Hobday
Tim and Kelly Holdgrafer
Nicholas Holt
Jessica J. Hultgren
Donald R. Husband
Emi Ito
Scott Jackson
Chad B. Johnson
Thomas B. Johnson
Bret Jones
Robert Jones
James and Martha Justus*
Michael W. Kanitz
Helga R. Kessler
Kevin S. Ketelsleger
Scott and Mary Kirby
Elisabeth and Corey Kline
Steve and Barb Knapp*
Kevin A. Kuhn
James and Jean LaBreche
Kathleen Lafferty
Amy Langer
Julie and Dave Lee
Dan Lema
David J. Luebbe
James A. Madich

Carolyn E. Magill*
Craig Malone
Lori McGinn
Bruce McGoogan
Audrey Mears
Steven Merwin
Gale D. Micka
Brian and Lori Milbrandt*
Michael A. Miller
Nathaniel and Katy Mollison
Neil Monson
Richard Morabito
Julie M. Morman
Lori Morrin
Patty Morris*
Betsy Mueller
Craig A. Mulcahy
Shrin and Lekha Murthy
Mark and Tammy Nagel
Mariah Neuharth
Vinh Nguyen
Jessica Noaell
Nick Norman
Deanna J. Nurnberg* and Todd Threadgill
Sean and Marnie O'Byrne
Mary Olson
David and Suanne Orenstein
Mark K. Owens
Elizabeth Pagel
Jill Patrou*
Sara Paul
Erin Payton
Barbara A. Pearson
Sheila Peterson
Ronald W. Pierce
Jim Pohlad
Sheila M. Pokorny
Catherine Popp*
Robert Proebstle
John Rasmussen
Jeannine Rivet and Warren Herreid
Gary and Catherine Roos

Julie A. Rose
Breanne and Michael Rothstein
Donald R. Rudolph
Val Ruttenberg and Randall Pattee
Jeffrey A. Samayoa*
Steven and Linda Sandvig*
Jon Schell
Diane M. Schmidt
Jeffery R. Schmidt*
Tom and Jeanne Schnack
Mark Scholtes
Bryan M. Scott
Allen A. Shaver
Nadia Siddiqui*
Patricia and Shakil Siddiqui
Kimberlee Sinclair* and Justin Caron
Kara and Ben Skjold
Jill Smith
Steven Smith
Melanie L. Snead
Troy Snethen
David and Asmeda Spalding
Barbara J. Steinhauer*
Catherine and Mark Stensrude*
Silke M. Stevens
Carol Suggs
John J. Tauer
Scott Theisen
Brian and Annette Tighe
Rodney and Judy Toft
Joanna Trapp Simpson
Eric N. Treschuk
Sara Tutewohl*
Bruce A. Ulrich
Louise Ulrich
Eric and Lisa Walker
Christopher Wall
Sheryl Wallace
Billy A. Walls*
Maxwell White
J. K. and Helen Whitney
Mike M. Witzmann
Jeremy Woelfel

\$100 - \$249

Anonymous Employees of Bank of the West
 Anonymous Employees of BBBS
 Anonymous Employees of Ernst & Young
 Anonymous Employees of Family & Children's Service
 Anonymous Employees of General Electric
 Anonymous Employees of Hartford Financial Services
 Anonymous Employees of HD Supply Waterworks
 Anonymous Employees of Medtronic
 Anonymous Employees of Rosemount-Apple Valley-Eagan ISD
 Anonymous Employees of Securian Financial Group
 Anonymous Employees of UPS
 Brad and Lynn Adams
 Thomas Akin
 Lynn and Mary Alberts
 Todd Allison
 Kevin E. Alstrin
 Angela Althoff
 Donette Ambrosy
 Kate Amerongen
 Arley Anderson
 Brent T. Anderson*
 Cheryl M. Anderson
 Troy R. Anderson
 Frederick Archer
 Jon F. Arnoldy
 Gordon B. Asselstine
 Tonya Austin
 Franklin Awason
 Davi E. Axelson*
 Cynthia and Marlan Bahmer
 Douglas Bailey
 Sarah and Wayne Bailey
 Julie A. Baker
 Rory and Karen Ballweber
 Derrick Banks
 Richard and Debra Barta
 Dean and Cathleen Barthel

Jim Batteiger
 Calvin T. Baucum
 Joel Bearden
 Sandy Becker
 Julia Beckey
 Jessica C. Beckman
 John J. Bellino III
 Paul Benson
 Kayla Yang Best
 Claire P. Bey
 Jocelyn Bianchi
 Natasha Birch
 Michael D. Bockenstedt
 Glen Boedecker
 John Boland
 Lindsay E. Box
 Jim C. Boyd
 Josh Branville
 Kara Breci
 Nancy Brenna
 Susan Brief
 Martha Brinson
 Desmond E. Brobby
 Margaret and John Brossart
 Laurie and Dale Broucek*
 Joseph G. Brown
 Terence Brown
 Gregory Brucker*
 Timothy Buchanan
 James Burnett
 Ryan R. Burns*
 Jeffrey and Anne Burt
 Kirsten and Patrick Burton
 Deb Butler
 Robert D. Byrne
 Sonia Cairns
 Michael R. Carey
 Jeffry and Kimberley Carney
 Natalie Chapman
 Yahya Chaudhary
 Christine Cheng
 Michael Cherry
 Eric D. Christensen

Ronald Christenson
 John Clancy
 Brian L. Clark
 Richard A. Cochlin
 Robert and Mary Colbert
 Martin Cole*
 Rod Coleman
 Scott Collins
 David and Harriet Conkey
 Mark L. Conlon
 Gregory and Kristie Cook
 Walter Coombe
 Roger and Ruth Cooney
 Pat and Anita Cooper
 Carl Corridoni
 Samuel and Mary Jo Cote
 Virginia C. Cothran
 Jenny W. Cotton
 Juan and Renee Cristiani
 Ryan D. Crosby
 John Crouch
 Lee and Anne Cunningham
 Elizabeth Webster Curtin
 Tucker and Caroline Dahl
 Nicholas Dau
 Janet and George Dean
 Debra Deanovic
 Martha Delaney
 Cory and Emily Deluca
 Jeffrey Demeny
 Peggy DeMuse
 Susan Devito
 Cynthia M. DeVoe
 Craig Dexheimer
 Jimmy Diaz
 Curt Dischinger
 Mark Dixon
 Tom Dixon
 Duane W. Dobko
 Gerald D. Dodd
 Thomas E. Dohm
 MaryBeth Dordelinger
 Eric D. Douty

THANK YOU TO OUR 2008 DONORS

Mary M. Dunn
 Arne Duss
 Scott K. Eggert*
 Michelle A. Eikam*
 Jim and Barb Eppel
 Dawn Epps
 Phillip and Susan Fantle
 Mark and Sheila Farmer
 Jeffrey O. Fink
 Mark Flaherty
 Daniel Flesher
 Justin Fletcher
 Jay C. Fogelberg*
 John Folkestad
 Scott Folstad
 James Fornshell
 Steven and Judith Ann Forshay*
 Jim and Kim Frederick
 Jonathan J. Fredericks
 David Fry
 Bo S. Fung
 David P. Gabel*
 Leah Gabrielson*
 Todd Gaffin
 Rosemarie Gagnon
 Carol Gallegos
 Mr. and Mrs. Mort Ganeles
 John and Leslie Garner
 Joyce Gavino
 Bayard and Melissa Gennert
 Bob Gibbs
 Tracy Gieser
 Dave and Sunny Girk
 Michael and Lisa Goede
 Paul V. Gonzalez
 William D. Gossman
 Kris A. Govro
 Joseph D. Graf
 Jennifer A. Greene
 Brian Greenwell and Lauren Karsh*
 David Greer

Eric and Kirsten Gregerson*
 Steve and Annice Gregerson*
 John and Barbara Greving*
 Thomas L. Grezek, Jr.
 Mark and Patricia Grimes
 Paul A. Groe
 Carly and Al Grogan
 Cheryl and Clint Gumke
 Sara and Jeremy Gumke
 Phyllis A. Haensel
 Susan and David Hall*
 Philip and Janet Hallaway
 Thomas Halpern
 Jodi Hammer
 Duane and Patricia Harf
 Judith K. Hanson
 Scott P. Hanych
 Janis Hardie
 Sandra Harris
 Dell Hartmann
 Lisa and Jack Hauser
 Nancy Hayes
 Ryan and Bridget Hayes
 Bruce Helmer and Laura O'Halloran Helmer
 Stu and Melanie Henderson
 Mary Hendricks*
 Jason W. Hendrickson
 Nicole W. Hense
 Amy Hernandez*
 Kate L. Herr*
 Peter Hess
 Larry Heyn
 Melissa Hillyer
 Lesli Hines
 Cindy and Geoffrey Hirman
 Brian Hissong
 Janelle L. Hoban
 Geordie Hochbaum
 Lisa Hoekstra
 Julie Hoff
 Joan M. Hokanson

THIS LIST NAMES ONLY A FEW OF THE PEOPLE AND ORGANIZATIONS WHOSE GENEROSITY MAKES IT POSSIBLE FOR BIG BROTHERS BIG SISTERS OF THE GREATER TWIN CITIES TO SERVE ITS MISSION. DUE TO SPACE CONSTRAINTS, WE ARE UNABLE TO LIST EVERYONE WHO PROVIDED SUPPORT FOR OUR WORK. THANK YOU TO ALL OF OUR SUPPORTERS.

THANK YOU TO OUR 2008 DONORS

Gwen and Justin Holzer
 Jeffrey and Elizabeth Hommes
 David Hooker
 Dennis Hopkins
 Dennis Hopton
 Cindy Howard
 Bruce and Jeannine Hubbard
 Kim and John Hubertus*
 Michael Huberty
 Chris Hughes
 Barry L. Hunter
 Ronald and Renee Hunter*
 Michael and Michelle Hyatt
 Tim Jacobson
 Gloria J. Jameson
 Barbara A. Janson
 Bruce C. Johnson
 Jennifer Johnson
 Tomiko Johnson-Kraus
 Judith E. Jones
 Kristen Jovle
 Michael A. Kaluzne
 Raye C. Kanzenbach*
 Donald and Barbara Karel
 Robert and Stefanie Karon
 Mary Kaul-Hottinger and David Hottinger*
 Patrick D. Keis
 John and Paula Kelly*
 Sheila and Christopher Kennelly
 Kenneth and Susan Kephart
 Jennifer and Doug Kerr
 Jayne Khalifa
 Joe and Denise Kirby
 Karissa Kirvida
 Barry and Julia Knight
 Rich Knowlton and Katie Piehl
 Cindy Kokott
 Shaki Kola-Lawal
 Karen E. Konkel
 Kellis Korner
 Tim Kotecki

Connie Kotula
 Mark Kowal
 Wade Kram
 Rachel Kuenzel*
 Brian Kueppers
 Donna La Brasseur
 Michelle Lafrenz
 Kristin Lambrecht
 Joseph and Lisa Lanz
 John Larkey
 Linda Larsen
 Elizabeth Laughlin
 John M. Lavander*
 William Lee
 Lawrence Lehman
 Linda Lei
 Mary V. Leinfelder
 Christopher Leitschuh
 Michael and Cynthia LeSage
 Donald J. Leshner
 Edward and Noreen Levine*
 Virginia Levy
 Dan and Bonnie Lewis
 Harvey S. Lewis, Jr.*
 Jess and Janet Lewis
 Kent J. Lindell
 Robert Link
 Jessica M. Linnert*
 Karen Locke
 Sheila M. Loehr
 Steven and Laura Lonergan
 Kathleen Lowe
 Kari L. Lucena
 Jeremy and Danielle Luffey
 William and Lorraine Lund
 Christopher and Sara Lyche
 David Lyman
 Curt MacKenzie*
 Stephanie M. Magloire*
 Dennis and Rhonda Malecek
 Pete and Lynn Mallinger

Wendy Marcano
 Lynn Martin
 Philip G. Martin
 A K. Masud
 George Mathews
 Jody Mattsen
 W. and Melissa Maurer
 Randel J. Maxwell
 Russell and Tracey Maziarka
 Nancy and Roger McCabe
 Patrick and Arlene McCarthy*
 Michael and Mary McDonald
 Jennifer K. McGonigle
 Paul A. McGrath
 Anne McInerney*
 Natalie McKnight
 Catherine A. McMillin*
 Barbara J. McNabb
 Sarah McPherson*
 Paco Medina
 Ted Meehan
 Lee Meinerz*
 Melvin Menke and Melissa Pint
 Mike A. Mergen
 Paul Meschke
 J Meyer
 Holly Miller
 Kurtis Miller
 Theresa M. Miller
 Gary J. Mithun
 Keita Miyamoto
 Thomas Mondragon
 Chris J. Mosley
 Bao Moua
 Tim and Danette Mulhere
 Barbara Muller*
 James E. Muller
 Don Myers and Mary Lou Valdez
 Daniel J. Nelson
 Erika J. Nelson
 Nancy and Richard Nelson
 Rose L. Nguyen
 Marlys Nichols

Hilton and Carolyn Nicholson
 Lisa and Scott Nicholson
 Maricela Nino
 Tom and Lucille Norkunas
 Matthew Nowak
 Mary Nutt
 Susan R. Nygaard
 Theresa O'Connell
 Michael W. Ohmes
 Daniel P. O'Keefe
 Kristine Olmschenk
 Kim Olson
 Marian N. Olson
 Mark L. Olson
 Susan Olson
 Stacey M. Orvik Garcia
 Margaret Orwig
 Josh Oslund
 Jim and Mary Overby
 Alex Pak
 Lethika Panicker
 Julie A. Parker
 Anant Patel
 Renee Patnode
 Gregory T. Pederson
 Dean and Melody Pekarek
 Katherine Pereira
 Scott Peterkin
 Brian A. Peters
 Diane Peterson*
 Patricia A. Peterson*
 Wade Peterson
 William Pettit*
 Jay J. Picconatto
 Maria Pistone*
 Steve Plant
 Annette Poelvoorde
 Gregory S. Polski
 Angela Poorman
 Julie C. Porter
 Todd J. Price
 Eric L. Przybyla
 Bill Pulles

James A. Quan
 Srinivas V. Rallapalli*
 Susan Ramlet
 Belva Rasmussen
 Kathryn A. Rasmusson
 Joel Rath
 Julie and Eric Rethemeier
 Tracey Reynolds
 Robert Richter
 Pat and Patricia Rickert
 Phil Riveness
 Paul R. Roach*
 David Robertson
 David Roesser
 Cassandra Rogers
 Lisa A. Ruehlow
 Jeremy S. Rufsvold
 Dan Rutman
 Mike Samuels
 Andrea and Gregory Sandager
 Cameron Schaffer
 Stephen Scheffley
 Stacy Scheller
 Linda A. Schintz
 Joe Schlosser*
 David J. Schmeling
 Peter Schmeling*
 Cathy M. Schmidt
 Doug and Debra Schmidt
 Nathan and Kyra Schmitt*
 Shelly Schoeberl
 Tonya and Heiko Schoenfuss*
 Eric C. Schoneman
 Max J. Schott III
 William E. Schramm*
 Gary Schrupp
 Dan Schultz
 John Schuster
 Mary Sears
 Michael P. Seaton
 Mark Seifert*
 Timothy J. Selle
 Natalie K. Sepeda

David A. Serure
 Joel Shapiro
 Tim Shaughnessy
 Richard and Karen Sherwood
 Sara Short
 B.J. Shultz
 Douglas Silge
 M. Gregory Simpson and Monta-Marie Hayner
 Steve Sinkula
 Michael P. Sis
 Mary A. Smalley
 Michon D. Smiley
 Jason Smith
 Jason and Linda Smith
 Joe Smith
 Tammy Smith
 Steve Snyder
 Brian Soller
 Tim and Jennifer Sorensen
 Matthew Sorsoleil
 Michelle Sotak*
 Lawanda Spears
 Andrea Speckel
 Peter E. Staloch
 William E. Stangler
 Gary W. Starks
 David Steigerwald
 Michael Stille
 Mark Stonacek
 Philip and Patricia Stone
 Christy Streff
 Antonio Strother*
 John and Lynn Stumpf
 Jay Sudit
 Wade E. Susee
 Timothy Swanson
 John Szpylka
 James and Paige Tarara
 Beth Tatge
 Kristina J. Taylor
 Sandi and Steve Taylor
 Franklyn Thayer

C. R. Thompson
 Rebecca Thompson
 Wayne Thorkelson
 TMarshall and Rachael Tokheim
 Francisco and Deborah Torres
 Ms. Connie Trom
 Lisa M. Truwe
 Jackie Turner
 David Tynes
 Ralph Van Hoven
 David C. Vanney*
 Steve Vazquez
 Peter and Mary Vorbrich
 Taryn L. Vormestrand
 John Vylasek
 John and Sue Wagner
 Steven and Beth Walen
 John Wallace
 Jeffrey Ward
 Meg Ward
 James Warren
 Roy Weigel
 Claudia Weisberg
 Pamela Wellumson
 Jessica Welt
 Steven and Vickie Wendt
 Barry and Stephanie Whalen*
 Terrie S. Wheeler
 Pauline Z. Whelan
 Susan White
 Jesse and Leanne Whitehead
 Jon and Jackie Williams
 Topeka T. Wilson
 David and Lori Windschitl
 Patricia K. Woodhouse
 Jerry and Rhonda Woods*
 Kindra Wray
 Rick Wriskey
 Bradley T. Yliniemi
 Kim and Margaret Zander
 Ellen Zebrun
 Timothy A. Zensen

ORGANIZATIONAL DONORS

\$500,000+

Federated Insurance Foundation
 Greater Twin Cities United Way

\$100,000 - \$499,999

Fred C. and Katherine B.
 Andersen Foundation
 The Arby's Foundation
 Carl and Eloise O. Pohlada
 Family Foundation

\$50,000 - \$99,999

Allianz Life Insurance Company of North America
 Big Brothers Big Sisters of America
 The Cargill Foundation
 The Curtis L. Carlson Family Foundation
 Graco Foundation
 The McKnight Foundation
 UnitedHealth Group Incorporated

\$25,000 - \$49,999

F.R. Bigelow Foundation
 Ecolab Foundation
 Federated Insurance
 GE Capital Fleet Services
 General Mills Foundation
 Otto Bremer Foundation
 The Saint Paul Foundation
 SUPERVALU Foundation

\$10,000 - \$24,999

Benfield, Inc.
 Best Buy Company
 Cargill, Inc.
 Carlson Companies
 Ecolab, Inc.
 Imation Corporation
 Karon Family Foundation
 W. K. Kellogg Foundation

THANK YOU TO OUR 2008 DONORS

Medtronic Foundation
 The Pentair Foundation
 Popp.com

\$5,000 - \$9,999

ADC Foundation
 Ameriprise Financial Gift Matching Program
 Andersen Corporate Foundation
 Andersen Corporation
 Best Buy Children's Foundation
 Bless our Children Fund
 Bloomberg L.P.
 Cummins Power Generation
 Deluxe Corporation Foundation
 General Mills
 Great Waters Brewing Company
 International Dairy Queen
 Steven C. Leuthold Family Foundation
 Links, Inc.
 Casey Albert T. O'Neil Foundation
 RBC Foundation - USA
 RBC Wealth Management
 Margaret Rivers Fund
 Wells Fargo
 Western Bank
 Xcel Energy Inc.

\$2,500 - \$4,999

3M Company
 Blue Cross Blue Shield of Minnesota
 BNC Asset Management Inc.
 Cisco
 Hardenbergh Foundation
 Hubbard Broadcasting, Inc.
 KPMG
 North Star Events
 Rosemount, Inc.
 Securian Foundation
 Smith Foundation
 Thrivent Financial for Lutherans Foundation
 United Way of McLeod County
 Vital Images, Inc.

\$1,000 - \$2,499

Elmer L. and Eleanor J. Andersen Foundation
 API Group, Inc.
 ARAMARK
 Data Recognition Corporation
 Kenwood Financial Partners
 Knopf Family Foundation
 Kopp Family Foundation
 Lakeside Capital Foundation
 Mosaic
 The Nicholson Family Foundation
 Orthogonal Software Corporation
 Prime Therapeutics
 Terhuly Foundation
 Tradition Capital Bank
 UMI Company, Inc.
 Warren Foundation
 Watson Wyatt & Company

\$500 - \$999

3M Club Afro American Society Club
 ARAnet, Inc.
 Banks & Company
 Big Brothers Big Sisters of Greater St. Paul Fund
 Colder Products Company
 CSM Corporation
 Deloitte
 Jack and Bessie Fiterman Foundation
 Hopkins Rotary Club
 InSitu Technologies Inc
 Kowalski's Markets - Corporate Office
 LaBreche
 Lakewoods Chiropractic PA
 Liberty Diversified Industries, Inc.
 Medtronic, Inc.
 Metes & Bounds Management Co
 National Concierge Association - Minnesota
 National Premium
 The Prouty Project
 Schwartz Williams
 Shakopee Lions Club

THANK YOU TO OUR 2008 DONORS

Snap Fitness Chrestotes Foundation
Sun Microsystems, Inc.
Twin City Produce Supplies, Inc.
Wells Fargo – St. Paul Regional Commercial
Banking
Westfield Insurance Foundation
WW Johnson Meat Co.

IN-KIND DONORS (AT OR ABOVE \$300)

3M Community Affairs
AirTran Airways
Allianz Life Insurance Company of North America
Ameriprise Financial, Inc
B96 KTTB
Bearpath Golf & Country Club
Begin With Your Skin Medspa
Best Buy Company
Bluefin Bay Resort
Michael and Mary Ellen Brooks
Burnsville Eye Clinic
Dale Busacker
Sarah Buxton and Julie Brown
Lisa Byrne and Joe Oberzut
Cargill, Inc.
Carlson Companies
Certes Financial Pros
Chalet Dental Care
Chambers
Daniel and Kristen Charette
Classics by David
Comcast
CT Ryan Photography
DFS Media
Stephen L. Dieringer
Craig Drugge

DVA Brand Communications
David Edin
Evantage Consulting
Event Lab, LLC
Fine Art Children's Photography
FMP
Gibson Musical Instruments
Roxanne Givens
Thomas and Mary Gormley
Eric and Kirsten Gregerson
Dave Hallett
Brandon and Jill Harbaugh
Shirley J. Hughes
Donald R. Husband
Johnson & Condon, P.A.
Josh Hackney Photography
David and Leigh Kaercher
Kodak
Terri Kruger
Matt Krush
Lake Wapogasset Lutheran Bible Camp
Gloria and Craig Lewis
Lifetime Fitness Foundation
Rich Lightsey
Paul Linstroth
Mahogany Bay
Randall and Lucy Mattson
Minnesota Lynx
Minnesota Swarm
Minnesota Timberwolves
Minnesota Twins
Minnesota Vikings Football Club, Inc.
Nash Finch Company
Jim and Karen Oman
Ordway Center for the Performing Arts
Park Tavern Bowling & Entertainment Center
Rick Petrekovic

Ellison and Whitney Pidot
Piraje Film
Planet Hollywood Resort & Casino
Nora Potamkin
Jim and Lynn Praska
PSAV Presentation Services
Rancho Manana Golf Club
Peter and Bonnie Raquet
Harry Rosenbaum
Sharon and Robert Ryan
Sadie's Floral, LLC
SafeNet Consulting, Inc.
Salon Innovations
Samsung Electronics America
Barbara P. Scherek
Rock L. Schindler
Mats Sexton
Wally Sharp
Shop NBC
Barbara Shotwell
Peter Spink
Stages Theater
Charles Steiner
Stoner & Associates
Jim and Stephani Tikalsky
Tix for Tots
Reed and Margie Tuckson
United Concordia Dental
Urban Mass Media Group
Virchow, Krause & Co., LLP
Wells Fargo Bank (Branch)
Wilson-McShane Corporation
Windsor Financial Group, LLC
Zel Skin & Laser Specialists
Tricia Zimmerman

MEMORIAL CONTRIBUTIONS

In Memory of...

Sally Sue Carlson
Philip G. Douma
Helen Fashant
Patrick Foley

Patti Hague's father
Hank Mathoh's father
Chris Murtagh
Steve Oliker
Ian Stephenson's father
Jeff Stolsberg
Vernit Swanson

Donated by...

James Hansen and Mariken Wogstad-Hansen
Thomas K. Davis
Carolyn K. McCannless
Beta Sigma Chapter
Edytha A. Foley
Margaret and John Foley
JoAnn Nelson
Richard and Marilyn Olson
Gary and Pat Oman
Ross M. Alwin
James and Kathryn Haymaker
Linda L. Murtagh
Gary and Cary Zahrbock
James and Kathryn Haymaker
Patricia A. Schray
Kimberly and Douglas Donley

HONORARY CONTRIBUTIONS

In Honor of...

Tommie Braddock
Paul Brown
Catherine & Jeff Burbank's wedding
Ed Christie's retirement
Jim Haymaker
Sara & Doug Hunt
Joyce & Vaughn Knapp
Rachel Kuenzel
Kris McIntosh
Kari Munson
Kent Pelissier
Mr. & Mrs. Patrick Rickert's 50th anniversary
Westfield Insurance employee volunteerism

Donated by...

Bonnie Bennett
Steve and Barb Knapp
Kathleen Kampa
Margaret Mindrum
Tammy Carver
Steve and Barb Knapp
Steve and Barb Knapp
Kristina and Jeremy Wright
The Stevens Group
Nancy and Charles Holden
Colder Products Company
Terry and Lucille Rickert
Westfield Insurance Foundation

FOR CORPORATE PARTNERSHIP
AND FOUNDATION INQUIRIES:

CLAIRE BEY, J.D.
Development Officer
651.789.2492
cbey@bigstwincities.org

FOR EVENT SPONSORSHIPS
AND IN-KIND DONATIONS:

NADIA SIDDIQUI
Director, Special Events
651.789.2431
nsiddiqui@bigstwincities.org

FOR MEDIA INQUIRIES AND
GENERAL DONOR RELATIONS:

KIMBERLEE A. SINCLAIR
Vice President, External Affairs
651.789.2469
ksinclair@bigstwincities.org

TO BECOME A BIG BROTHER OR
BIG SISTER:

DARLENE BELL
Manager, Community Outreach & Volunteer Recruitment
651.789.2413
dbell@bigstwincities.org

LEADERSHIP TEAM



GLORIA C. LEWIS
President and CEO

BARBARA ALFREY
Director, Human Resources & Volunteer Services

CINDY BAHMER
Vice President, Programs

LINDA BLYTH
Executive Assistant to the CEO

KARI MUNSON
Vice President, Finance

DEANNA NURNBERG, CFRE
Vice President, Research, Evaluation & Special Projects

KIMBERLEE A. SINCLAIR
Vice President, External Affairs



2008 BOARD OF DIRECTORS



CHUCK ROEHRICK (CHAIR)
Prime Therapeutics

SARAH BUXTON (VICE CHAIR)
Federated Insurance

LAURIE LAFONTAINE (TREASURER)
Allina Hospitals and Clinics

COLLEEN REITAN (SECRETARY)
Blue Cross Blue Shield

GLORIA C. LEWIS
BBBS of the Greater Twin Cities

MERLE BELL-GONZALES
Minneapolis Public Schools

PAUL BLOMGREN
Wells Fargo Institutional
Brokerage and Sales

BARON CARR
Carlson Hotels Worldwide

MIKE CARREL
Vital Images, Inc.

GINA CESARETTI
Dorsey and Whitney, LLP

DAVID DINES
Cargill, Inc.

MIKE FELMLEE
The Prouty Project

JOHN HUEG
Wells Fargo Home Mortgage

SHIRLEY HUGHES
Ceridian Corporation (Retired)

SUSAN KELLY
Investment Analyst

KEVIN KETELSLEGER
PCG, RBC Dain Rauscher

BETH LABRECHE
LaBreche

RICH LIGHTSEY
3M Display and Graphics Business

JIM SIMPSON
International Dairy Queen, Inc.

DR. REED TUCKSON
UnitedHealth Group, Inc.

JOHN VEGAS
Ecolab, Inc.

WENDA WEEKES MOORE
W.K. Kellogg Foundation



Big Brothers Big Sisters
 of the Greater Twin Cities
 2550 University Avenue, Suite 410N
 St. Paul, MN 55114

Non-Profit
 U.S. Postage
PAID
 MINNEAPOLIS, MN
 Permit No. 1829

CONFIDENCE



COMPETENCE



COMMUNICATION



CARING

